

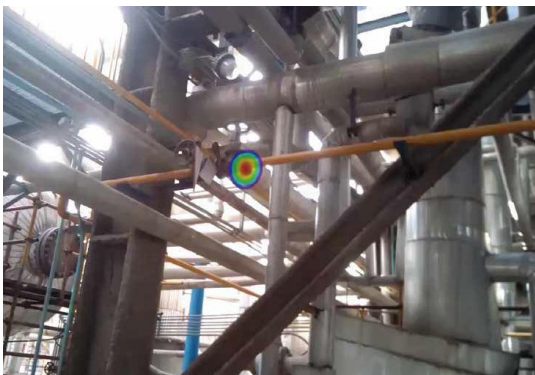
ACOUSTIC IMAGING CAMERA

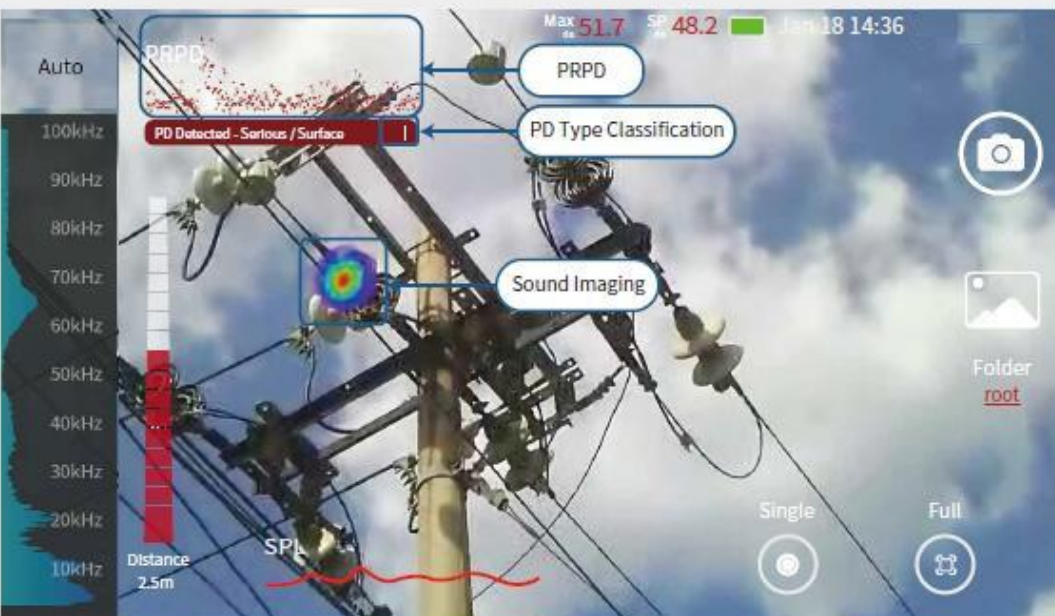
KAC25
(163 Microphones)



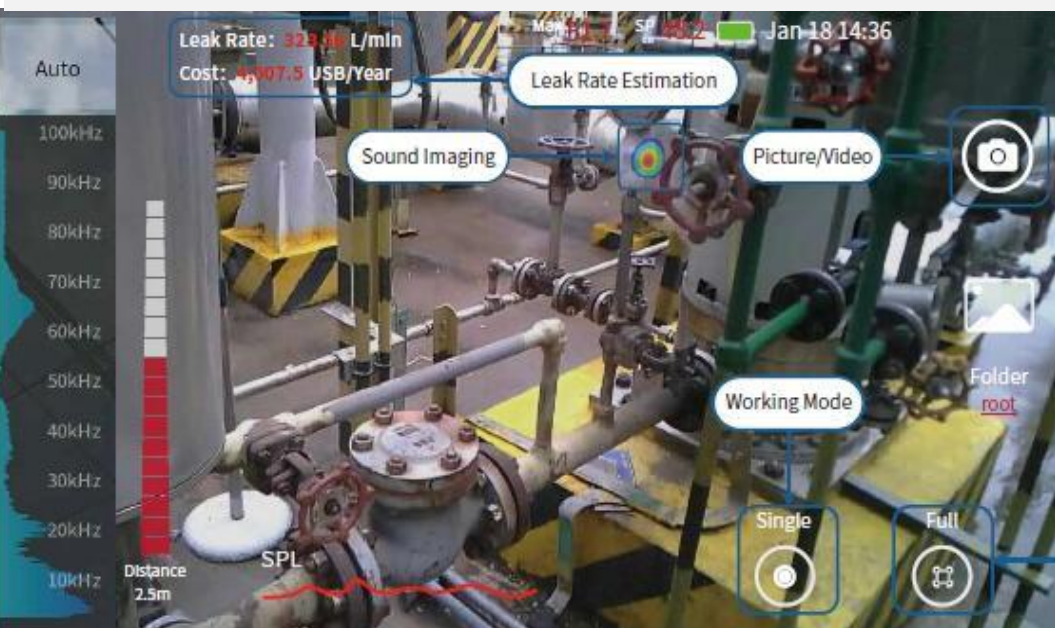
GAS LEAK DETECTION

PD INSPECTION





Partial Discharge Detection



Gas Leakage Detection

- Sound Imaging: Sound source visualization, displaying location of discharge in large area.
- PRPD: Intuitive and effective diagram to assess existence of electrical discharge.
- PD Type Classification: Automatic partial discharge type classification and severity assess.
- Picture/Video: Take sound imaging pictures or record sound imaging videos.
- Leak Rate Estimation: Estimate gas leak rate and cost according to gas type, pressure and other parameters and real-time sound pressure level.
- Working Mode: Select sound imaging mode among single, multiple, and sensitive.
- Area Focusing: Eliminate noise outside the area of interest to improve sound imaging accuracy.

SPECIFICATIONS

MICROPHONE ARRAY

Number of Microphones	163
Microphone Type	Digital MEMS
Sensitivity	-26 dBFS (1 kHz, 94 dB SPL)
Signal-To-Noise Ratio	64.3 dB(A)
Sound Sampling Rate	200 kS/s/ch
Maximum Imaging Frequency Range	2kHz - 100kHz
Acoustic Imaging Frame Rate	25FPS
Recommended Imaging Range*	0.3 - 130m
PRPD & PD Type Classification	Supported
Leak Rate & Cost Estimation	Supported
Area Focusing	Circle in Center

CAMERA AND DISPLAY

Visible Lens Focal Length	3.4 mm
Camera Field of View (FOV)	64° (H) × 40° (V)
Camera Pixel	Max 13 million
Maximum Image Size	1920 × 1200
Sound Picture Resolution	1920 × 1200
Sound Video Resolution	1920 × 1200
Focusing Mode	Fixed focus
Display	7 inch Touchscreen
Display Brightness	Adjustable brightness

FUNCTION AND INTERFACE

Bluetooth	4.2
Port	USB 3.0
Picture	Supported
Picture Format	.jpeg
Video	Supported
Video Format	.mp4
Text Annotation	Supported
UI Language	English
WIFI	Supported
Built-in Storage	128GB, Max 1TB
Fixed Method	Handheld/Tripod

OTHER PARAMETERS

Batteries & Usage Time	Rechargeable Li-ion&4h
EMC	ClassB
Operating Temperature	-20 °C to 50 °C
Relative Humidity	< 95%, Non-Condensing
Explosion-Proof	Optional
Ingress Protection Code	IP54 Optional
Weight	1.2kg
Size (L x H x W)	232mm * 165mm * 86mm
Attachment	Power adapter, Charging cable, Adapter cable USB flash drive, Card reader, Wrist strap, Instrument box

* The maximum imaging range depends on the amplitude of sound to detect.